



President’s Message – Barbara Kalbli

Hello Docents,

Thanks to all those who volunteered for Boo At The Zoo! By all accounts, the special event was enjoyed by many and you helped in achieving this success. In the spirit of “Boo”..., What do you get if you divide the circumference of a jack-o-lantern by its diameter? (Look for the answer at the end of this article.)

Fall tours are going very well — so well the Auxiliary has exceeded the “expected revenue budget” (set by Stacey) for the entire fiscal year! TE hours totaled 169; IE hours totaled 371; and ZOOM and Loft totaled 322 hours. Additionally, 50 CEC hours have been earned. September has been a fruitful month for the Auxiliary. Kudos, all.

The zoo family was saddened with the loss of Carlotta, our Mountain Tapir. Now, only six Mountain Tapirs remain in human care within the United States — five at the San Diego Zoo and, Cofan, here at CMZ. This Keystone Species of the high Andes number about 2,500 mature adults in the wild. Carlotta will continue to be an ambassador for her species at The Denver Museum of Nature and Science.

Finally, I am again reaching out to our membership asking for two individuals to fill in the vacancies of the Social Committee. Please consider this Supplemental Chair position.

Remember that it takes a village!

Warmly,

Barbara



P.S. Answer to riddle is **Pumpkin Pi**

Linnea McDonald and Joelle Shreves, Editors

DATES TO KNOW

Meetings start at 9:30 a.m.

Nov 3 Board Meeting....Safari Lodge

Nov 10... TE Meeting and Keeper

Appreciation Luncheon LML

Nov 13 ... IE Meeting.....Safari Lodge

Nov 17 ... Education Mtg....Safari Lodge

December No meetings

Dec 4.....Holiday Party ... Marie Poyzer’s

Jan 5.....Board MeetingSafari Lodge

Jan 8.....IE Meeting EdVenture

Jan 12.... TE MeetingSafari Lodge

Jan 26.... Education MtgSafari Lodge

CECs and TRAINING

In-person CEC starts at 9:30 a.m.

January training time TBA

Fall Recall CEC..... November Zooline

Jan 8.... Zoo School starts ...Safari Lodge

IN THIS ISSUE

Monthly Program Information 2

New 2022 Class..... 2

Animal Enrichment 2

November 6 Field Trip 2

Book Recommendation 2

Foothills Trail Detour 2

Otters in the Snow Stamps 3

Pictures 3-4

Fall Recall..... 5



Monthly Program Information

TE Meeting and Keeper Appreciation Luncheon in the Lodge at Moose Lake on November 10

Dr. Liza will be providing the program. Can't wait to hear what she has to tell us!

Marsha Fogarty, President-Elect

IE Meeting on November 13 in the Safari Lodge

No additional information at this time.

New 2022 Class

We have 12 applicants for the docent class of 2022. At this writing, we still have three that are going through their background checks. Some of our new prospective trainees have already followed a tour and attended either an IE or TE meeting. Some of the feedback from new trainees two years ago was that it would be helpful if they had the opportunity to follow a school tour to see what that is all about. Marianne and I are hearing great things and we thank those mentors and tour docents who are accommodating those tour follows. We hope the tour follows work out well and this may become a policy we do every fall.

The training schedule is typed up and will be in the Dec. Zooline for those wishing to attend and earn CECs. Classes for the new trainees start Jan. 8, 2022, with CEC classes starting Jan. 15.

Those who wish to have a printed copy of the 2022 Education Manual need to get their name to Marianne Brooks by Nov. 15. As always, it will cost \$15 and that is without a notebook. It will be printed on both sides to save trees and notebook size.

There will be an Education Committee meeting on Nov. 17 at 9:30am at the Safari Lodge for anyone who wishes to attend.

Greta Johnson, 1st VP

Animal Enrichment

Thanks to the wonderful October Docents who helped with Enrichment: Linnea McDonald, Anne Wardrop, Jean Bennett, Sue Mayer, and Kathy O'Donnell, who helped with prepping the bags to be filled. The next time to help will be after the November 10 TE meeting.

I've been told egg cartons are not needed at this time. Please check with Big Back Yard keepers before bringing any directly to them. The DRC has a container for paper towel rolls (with one side closed, please). TP rolls should be brought in a bag, so they're separate from the



PT rolls. Thanks so much to all of you who have contributed these items.

Ellie Solomon, Enrichment Chair

November 6 Field Trip (Tickets Available)

We have extra tickets for the Denver Zoo this Saturday, where we will be guests and will have three docents guiding us through it. First come, first serve. For those who ask first, I will send further information, etc.

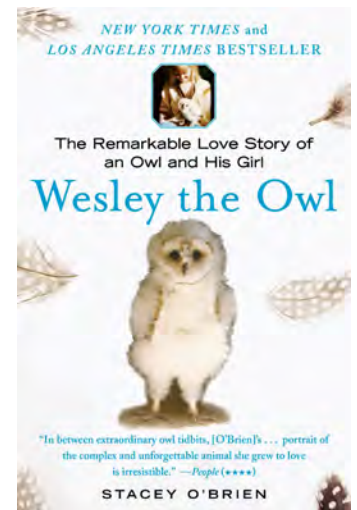


Denver Zoo (10am to 12:30pm) at 2900 E. 23rd Ave, and **Denver Museum of Nature & Science** (2pm to close) at 2001 North Colorado Blvd. in Denver.

Joan Adkins, Field Trip Coordinator

Book Recommendation

I was and still am captivated by this book. The author was a student getting her degree in wild animal behavior. On Valentine's Day in 1985, she was asked to hand raise and foster a baby barn owl with an injured wing. This book lasts for 19 years of her experience. I admit I have taken a long time to read this because I keep going back to re-read parts. I had never heard of this book until a neighbor gifted it to me. It had been the subject of her book club recently. It is available online and at the library, both as a book and an e-book. So, in honor of Hoosier, our Barn Owl, give it a try!



Lovice Riffe

Foothills Trail Detour

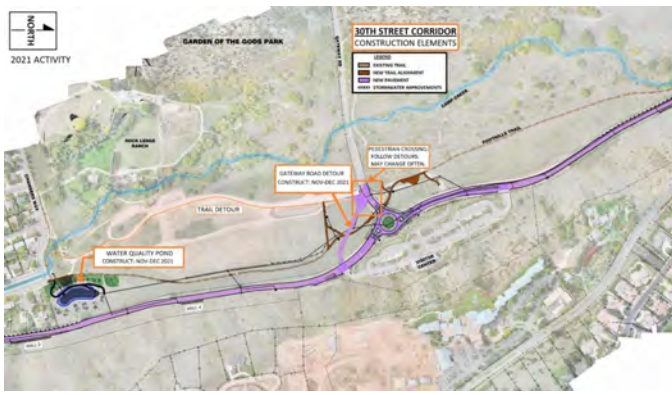
A temporary detour began diverting Foothills Trail users on Oct. 25 and will continue throughout the duration of the project. Starting Nov. 4, 30th Street will be closed in both directions between Gateway and Mesa roads through the spring of 2022. Access to Garden of the Gods Park, including the Visitor & Nature Center, will be maintained throughout the project.

The Phase 1 detour route will direct traffic to use Centennial Boulevard and Fillmore Street to enter Garden of the Gods Park from 30th Street south of Gateway Road. During this phase, the park will not be accessible from Garden of the Gods Road by car. *(continued next page)*

Detour notifications will be posted on major access routes. Mesa Road will remain open for local access only.

While work is underway, drivers, cyclists and pedestrians are asked to remember that heavy construction equipment and workers will be operating along 30th Street and the Foothills Trail. The active construction area will be defined with signage, and it is important for users to obey directional and safety signage in this area. Please reduce speeds and use caution around equipment and work crews. For additional project information, visit www.ColoradoSprings.gov/30thStreet, or call (719) 315-3102.

Lovice Riffe



Otters in the Snow Stamps

For those of you who like to use actual stamps to mail letters or cards, here are some holiday/seasonal stamps available from the U.S. Post Office now. You can order them online so you don't have to wait in one.

Lovice Riffe



CMZA Zooline Information



The deadline for the December issue is **November 18** (a few days early to accommodate the Thanksgiving holiday).

Please send all submissions — information, articles, pictures, etc. — to cmza.zooline@yahoo.com.

Thank you, *Linnea McDonald & Joelle Shreves, Editors*



Picture Credits

Page 1, *Bean in the Loft* by Barbara Kalbli and cartoon from Judy Sondermann

Page 3, *Abuto* by Susan Hoxie

Page 4, top left counter-clockwise, *Pandora the Pelican*, *Jumbe with his enrichment*, *Huey and Pinto (father and daughter Red River Hogs)*, *Jumbe close-up*, *Tim Tam the wallaby*, *Tristan the tree kangaroo asleep in his meal*, and *Bo, watching a chicken walk by his enclosure*, all by Susan Hoxie



The Fall Recall 2021

Name: _____

The duration and timing of life cycle events such as reproduction and longevity vary across organisms and species. Using animal characteristics and biofacts from *Water's Edge Africa*, compare and contrast adaptations and reproduction, by answering the following questions on the Nile Hippopotamus, African penguins, and Pink-backed pelican.

Using the **Docent Manual** posted on **My Impact (Section J, Section K, page 11)** will help you answer these questions. **My Impact** is designed so that a page in the *Table of Contents* can be highlighted and selected. This action will take you directly to that section of the notebook.

It is ok to create an answer sheet by listing the letter or number next to the correct answer. Email or send this answer sheet to me. If you prefer to download/print the **Fall Recall** and snail mail or give it to me, that is also ok. Please do this by **November 30**, so we can calculate CECs for the first part of the Docent year before January 2022. This **Fall Recall** is worth **1 CEC**.

(Note: each Docent needs 2 CECs for 2021-2022.)

Lynne Stefonik, 4450 Winding Circle, 80917, stefolc@comcast.net

I. Pink-backed Pelican (Fill in the blanks)

The Pink-backed pelican is a resident breeder in 1.) _____ and 2.) _____ of Africa, 3.) _____ and 4.) _____.

The Pink-backed Pelican adaptations include: 5.) _____ and a 6.) _____ - _____ beak it can expand when 7.) _____.

Courtship involves 8.) _____ upward and 9.) _____.

Males and females also share 10.) _____ and 11.) _____.

These pelicans tend to roost and breed in trees, but will also roost on 12.) _____, 13.) _____, coral reefs, and 14.) _____.

What are three interesting facts about Pink-backed Pelicans?

15.)

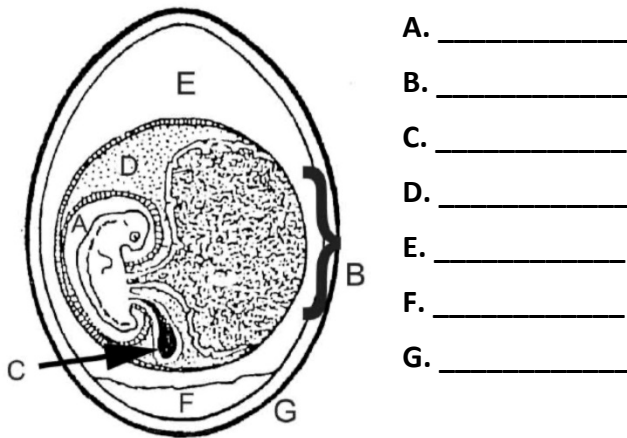
16.)

17.)

II. African or Jackass Penguin

- 1.) Where are these penguins found?
- 2.) What can be described, regarding penguins, by using the goggles in the *Water's Edge* Cart?
- 3.) Using the model of webbed feet in the *Water's Edge* Cart, how would you explain why this characteristic helps the African Penguin adapt to its environment?
- 4.) Why are penguins now competing for breeding space with larger animals?
- 5.) Do both penguin parents care for eggs and chicks?

III. Parts of the egg. (Label the following)



IV. Nile Hippopotamus (Fill in the blanks or answer the questions)

The reproduction of a Nile Hippopotamus is usually a single, 1.) _____,
2.) _____ birth. The young 3.) _____ in water, and are
4.) _____ by the mother.

5.) An adult hippopotamus weighs: _____

6.) A newborn hippopotamus weighs: _____

7.) The baby hippo at CMZ is named: _____

8.) How does the behavior of the Nile Hippopotamus differ during the day and the night?

9.) The *Water's Edge* Cart contains a model of a Hippo molar. How can you use this biofact to tell CMZ guests about the diet and teeth of a Nile Hippopotamus?