



President’s Message – Jeanie Baratono

Summer has flown by, and fall will be here before we know it. We’ve had a successful season of special events with a few more to come. We celebrated World Lemur Day and World Lion Day and I hear both were a great success. We also had two more Members’ Nights, and the weather cooperated, and both were beautiful evenings. Our program with Dave Ruhl, VP of Campus Planning and Facilities Management, was very informative for us and for him. The zoo has been focusing on getting the road up and open. The gate has been installed from the parking lot up behind WEA. The carousel was dismantled and will be moved to where the playground stands. The playground equipment is rumored to be going up to the top of the sky ride. The path down from BBY is closed and Old Gnarly will be dismantled to make room for the carousel. So many changes to which we need to adjust. A couple of reminders to pick up your certificates and new name tags on the desk in the DRC if you have not done so. Also, if you are parking inside the zoo be sure to put your flashers on and close the gate behind you. Blue summer shirts may be worn until September 30. Thank you for all the hours you have put in on carts, special events, BBY, Loft, and ZOOM programs in this very busy summer! You are on the front lines connecting our guests to wildlife and we appreciate all the time you give. **Jeanie**

We Believe Statement

We believe people are the key to the future of wildlife and wild places. Engaging their hearts and minds with experiences is essential to the success of our conservation education messages. EVERY experience from gate to gate is crucial to our success.



DATES TO KNOW

Most meetings start at 9:30 a.m.

CECs start at 9:15 a.m.

Education Committee at 10:30 a.m.

- Sep 6..... Exec Board Meeting DRC
- Sep 13... Docent Meeting SL
- Sep 27... Education Committee DRC
- Sep 27... CEC Endangered SL
- Sep 30... CEC Endangered SL
- Oct 4..... Board Mtg (Exec/Supp)..... SL
- Oct 10... EWASO Lions Speaker
(1-3pm)..... SL
- Oct 14... Docent Meeting SL
- Oct 18... CEC Zoogeography SL
- Oct 25... Education Committee DRC
- Nov 1.... Exec Board Meeting DRC
- Nov 8.... Docent Meeting and Keeper
Appreciation Lunch..... LML
- Nov 15.. Education Committee DRC

Key: DRC = Docent Resource Ctr, LML = Lodge at Moose Lake, SL = Safari Lodge
**** Mandatory Meeting. If unable to attend, contact the president or president-elect.**

CECs and TRAINING

CECs start at 9:15 a.m.

- Sep..... Fall Recall..... Due 09/30/23
- Sep 27... CEC Endangered SL
- Sep 30... CEC Endangered SL
- Oct 18... CEC Zoogeography SL

Key: SL = Safari Lodge

IN THIS ISSUE

- September Docent Meeting2
- September Cannolis.....2
- CEC Corner2
- Animal Update2
- New Endangered Animal Stamps2
- Fall Field Trips3
- Meet & Greet Drawings3
- Articles and Info of Interest3
- Photos4
- 2023 Fall Recall8

September Docent Meeting

Dear Docents, please join us for our monthly meeting on Wednesday, September 13 at 9:30 a.m. in the Safari Lodge. We will have a short presentation from Guest Experiences and the drawing for BBY and Penguins & Pelicans, followed by a tour of the Scutes basement. See you then!



Marianne Brooks, President-Elect

September Cannolis

Cannolis will be made after the September 13 docent meeting. I encourage anyone who hasn't given it a try to join us. It is volunteer hours and usually takes us a little over an hour. Let me know if you would like to help. (It's a lot of fun!)



Jean Bennett, Enrichment Chair
Bennett.jean1@gmail.com

CEC Corner

We held our first in-class CEC of the year on August 26 on Carts: Connecting Hearts & Minds, with over 50 attendees. Thanks to all who showed up and made it a great success.

Our next in-class CEC is an advanced tour, Endangered. Check SignupGenius and sign up for one of the two dates: Wednesday, September 27, or Saturday, September 30. Remember, you may only lead that tour or safari if you are certified on it — attend the CEC to earn credit and to certify. The start time is 9:15 a.m. in the Safari Lodge. This tour has been refreshed this year, so be sure to grab the latest copy from the DRC computer (or by attending the CEC). All of the conservation statuses and programs have been updated. We welcome everyone to attend — those working carts will benefit from attending, too!

The Fall Recall was released in August, with a Sept 30 deadline. It is also in this edition of the Zoline. You can drop your completed copy off in the DRC Fall Recall box, mail it back to me, email it to me or even take it online. Check it out and earn one CEC for completing it!

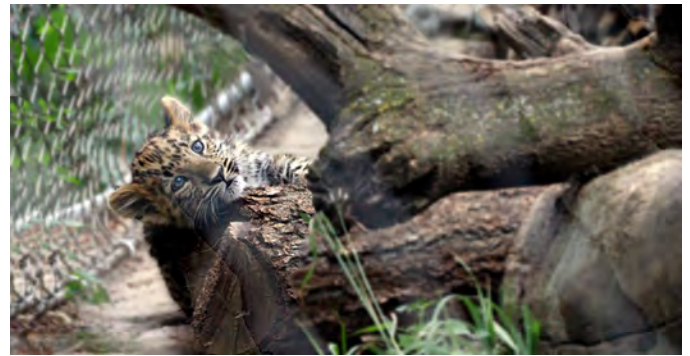
I just picked up two of the most amazing books from Lynx Nature Books: [All the Birds of the World](#) and [All the Mammals of the World](#). They are incredible. I will bring them to the Endangered CECs if you want to take a peek at them. They are really terrific resources.



Always Be Learning, *Cris Stoddard, CEC Chair*

Animal Update (July)

- Wallaby, Dobby, was seen successfully breeding with Gidgee, twice
- Meerkats, Sage and Hullabaloo, were seen breeding
- Zebra, Mugambi, was humanely euthanized after a decline in health following immobilization
- Introductions between warthog, Alex, and hippos, Zambezi and Omo are being tried out
- Gorillas, Asha and Goma, continue to spend time together comfortably but no breeding has been observed
- Lions, Elsa and Aslan, started howlies again after Aslan's tail injury
- Sloths, Ayson and Boscoe, were introduced and are together in the atrium in Scutes
- One of the naked mole-rats in the upper colony had radiographs and an ultrasound to confirm pregnancy
- Leopard cubs, Basha and Mango, are exploring the main yard (picture below)



New endangered animal stamps at the post office

There is a new set of Forever stamps available from the U.S. Post Office that marks the 50th anniversary in 2023 of the Endangered Species Act. The pane of 20 stamps features 20 representative endangered animal species, including the Mexican gray wolf and Wyoming Toad.

One of our docents, Lovice Riffe, thinks the Mexican gray wolf pictured is our late and vicariously loved mom of Luna. Her photo (the same as on the stamp), was flashed on the Empire State Building for their celebration of Endangered Species Day. Purchase or learn more about them here: <https://bit.ly/3PebuQl>.



Fall Field Trips

Hello docent friends! There are two upcoming field trips. If you have not signed up yet and want to attend one or both (see info below), email me at rorydoggie@gmail.com.

Saturday, Sep 23 — Tarantula watching and Sunrise Equinox Tour of Crack Cave in Picture Canyon (\$30 pp)

<https://canyon-journeys.com/tours/>

A 4-hour drive, so we will carpool and stay overnight Friday in Springfield at Cobblestone Inn (Best Western).

We will arrive Friday, Sep 22, in Springfield, CO, and drive around the area to see tarantulas out looking for love. On Saturday morning, we will meet Laneha, our tour guide, at the Picture Canyon entrance at 5:30 a.m.

Picture Canyon, while tucked away in SE Colorado, is well known for the Equinox solar alignment that occurs on Equinox morning at sunrise in Crack Cave. The sun's rays fall precisely on ancient markings on the cave wall only two times a year for approximately 12-15 minutes on Equinox mornings. This tour is a unique experience and the tour itself is limited to 15 people to ensure a quality experience. Once the solar alignment is over, the tour includes interpretive stops at two more sites on the way out of the canyon to expand our understanding of the area and its early inhabitants.

Thursday, October 26: The Wild Animal Sanctuary
2999 County Road 53, Keenesburg, CO 80643
www.wildanimalsanctuary.org

Established in 1980, The Wild Animal Sanctuary (TWAS) is a state and federally licensed zoological facility and a 501(c)(3) nonprofit organization. Their educational facility is located outside of Keenesburg, 30 miles northeast of Denver, on 1,214 acres of rural, rolling grasslands, sheltering more than 750 large carnivores! TWAS is the largest and oldest sanctuary of its kind in the world. Their mission is 1) to prevent and alleviate cruelty to animals that are abandoned or were subject to deprivation or neglect, by providing care and boarding, 2) to rescue and provide life-long homes for large, exotic, and endangered captive wild animals, and 3) to educate the public about the causes of and solutions to the world's Captive Wildlife Crisis. We will order lunch prior to the visit so it doesn't overwhelm the café. Sack lunches are allowed.

We will carpool from King Soopers on Baptist Road. Friends and family are invited. See rate info below:

- \$50 entry fee for ages 13-69
- \$20 entry fee for ages 70+

Kathy O'Donnell, Field Trips

Docent Meet and Greet Drawings for BBY and Penguins & Pelicans

Big Backyard (BBY): Drawings will be held quarterly with a docent's name going in one time only. The docent chosen should contact Loft staff at loftstaff@cmzoo.com to set up their meet and greet, which can be Loft or BBY animals only, including the beavers and barn owl. The docent may include 3 other people in the experience. The docent has until the next drawing to schedule it or the experience is forfeited. If the experience is scheduled and canceled or the docent does not show up, the experience is forfeited.

Penguins & Pelicans (P&P): Drawings will be held quarterly with a docent's name going in one time only. The docent should contact Steve Carter at scarter@cmzoo.org to set up their meet and greet, which can be penguins, hippos, or warthog. The docent may include 3 other people in the experience. The docent has until the next drawing to schedule it or the experience is forfeited. If the experience is scheduled and canceled or the docent does not show up, the experience is forfeited.

Articles and Information of Interest

- *Smithsonian Magazine*, A Rare Two-Headed Snake Back on Exhibit at a Texas Zoo, <https://bit.ly/3qNPm62>
- *People Magazine*, Spotless Giraffe Believed to Be the Only One 'Anywhere on the Planet' Born at Tennessee Zoo, <https://bit.ly/3Edu2dB>
- *Nat Geo*, Cougars are ambushing and killing wolves—and no one knows why, <https://on.natgeo.com/480DWfN>
- The Wildlife Society: Rare ocelot still roaming Arizona mountains, <https://bit.ly/44tnSjC>

CMZA Zooline Information (OCT Issue)



The deadline for the October issue is **Friday, September 22**. Please send all submissions for the **October** issue – information, articles, pictures, etc. – to cmza.zooline@yahoo.com.

Joelle Shreves and Bailey Southard, Co-Editors



Photos









Photo Credits

(Page 1) Marie Poyzer and Jim Hunter at World Lion Day, photo by Linnea McDonald

(Page 2) One of our Amur leopard cubs with mom close by, by Linnea McDonald

(Page 3) Digger (on left) and Emmet playing, by Susan Hoxie

(Page 4)

- *Top left, Msichana and Kay, by Susan Hoxie*
- *Bottom left, Cindy Carroll and camp counselor, Evan at Zoopeteers, by Jeanie Baratono*
- *Top rt, red-eared slider, by Deborah Compton*
- *Middle rt, Beezler getting out of the tub of water "gracefully", by Susan Hoxie*
- *Bottom rt, one of our orangutans on one of the zoo's recent Dog Days, submitted by Joelle Shreves*

(Page 5)

- *Top left, ring-tailed lemurs, by Deborah Compton*
- *Middle left, Goma, by Deborah Compton*
- *Bottom left, Timmy has wheels for his trip from The Loft to BBY, by Susan Hoxie*
- *Top rt, Inzi, by Deborah Compton*
- *Middle rt, Kwisha, by Deborah Compton*
- *Bottom rt, Mocha the prehensile-tailed porcupine, by Susan Hoxie*

(Page 6)

- *Top left, African penguins "flying" through water by Deborah Compton*
- *Middle left, Jumbe's prehensile upper lip, by Deborah Compton*
- *Bottom left, Little Foot the red tegu at Royal Gorge, by Jeanie Baratono*
- *Top rt, Pandora, by Deborah Compton*
- *Middle rt, Hadiah, by Deborah Compton*
- *Bottom rt, Hashbrown and Squash, by Susan Hoxie*

(This page) World Lion Day photos

- *Linnea McDonald (top left) and Vicki Unger*
- *Sue Corcoran (bottom left) and Janie Levis*
- *Elsa enjoying the day, by Marianne Brooks*

Thank you to all who submitted the wonderful photos!

Fall Recall 2023

YOUR NAME: _____

This Fall Recall is worth 1 CEC. Each active docent is required to complete 2 CECs for the 2023-2024 docent year.

This Fall Recall has 35 questions. Complete and return the Fall Recall by September 30 to receive credit.

- Complete the Fall Recall **online** at <https://forms.gle/NZJCLaEmRAbTuwvP9> and submit **no later than** September 30, 2023.
- Download the Fall Recall, fill out the answers where indicated and **email** the document to Cris Stoddard **no later than** September 30, 2023.
- Print the Fall Recall, fill out the answers where indicated and **mail** it to Cris Stoddard, **postmarked no later than** September 30, 2023.
- Print the Fall Recall, fill out the answers where indicated and **drop it off** in the Fall Recall **box** in the DRC **no later than** September 30, 2023.

Answers below are to be found in the 2023 Docent Manual (printed or online).

1. Download from [this Dropbox link](#).
2. **Or** copy from the DRC Computer (look in the Documents folder) to your USB drive.

Pro-tip: when using the electronic version, **search** for terms using quotes in the search bar. Examples: "Living organisms" or "African Elephant". Not necessary, but can help.

Pro-tip: the Docent Manual, **not** the Internet, contains the expected answers.

True | False Questions - Indicate T (true) or F (false) for each question

1. _____ Birds have teeth.
2. _____ Birds have forelimbs modified into wings, although they may not be used for flight.
3. _____ Birds are ectothermic.
4. _____ The single unique feature that distinguishes birds from the other classes of Vertebrates is the presence of feathers.
5. _____ Emus have a keeled sternum.
6. _____ Peafowl are native to India and Sri Lanka.

Matching Questions - fill in the letter of the correct term for each question below.

A - Precocial	E - Genetic viability
B - Altricial	F - Nictitating membrane

C - Access corridors	G - Tapetum lucidum
D - Carrying capacity	

7. _____ A reflecting layer located behind the retina of the eye; commonly found in nocturnal animals.
8. _____ Young that soon after birth or hatching are capable of moving about and feeding with little parental help.
9. _____ Population size in a given area is sustainable without harm to the ecosystem.
10. _____ Blinking membrane that can cover the eyes of certain animals providing protection. It keeps the eyes clean and moist. It may be clear, tinted or opaque.
11. _____ Helpless at birth, young in need of prolonged parental care and training.
12. _____ A large enough gene pool for a species to maintain diversity.
13. _____ Environmental paths, often foliage or openings that provide the means to move relatively easily and safely from one habitat to another and back again.

Multiple Choice - put an X on or circle the correct answer

14. The rhino has a symbiotic relationship with a bird called the oxpecker. Originally, this symbiotic relationship was thought to be an example of TERM ONE because the rhino benefits from having ticks and mites removed by the oxpecker, and the oxpecker benefits from consuming the ticks and mites. More recently, it is found that oxpeckers feed on rhino blood, making this also an example of TERM TWO.

- A. ___ Mutualism, Parasitism
 B. ___ Commensalism, Parasitism
 C. ___ Parasitism, Mutualism

15. The Red River hog listens for the vocal calls of other fruit eating animals (chimpanzees and hornbills) to find fruiting trees; this is an example of the symbiotic relationship:

- A. ___ Mutualism B. ___ Commensalism C. ___ Parasitism

16. This species of bird is native to East Africa, lives in open country near water, and requires swamps for breeding. They stand up to 48" tall and have a wingspan of up to 25". They are diurnal and omnivores, eating insects, millipedes, frogs, lizards, plants and grains. They roost in trees. Their eggs are blue.

- A. ___ Von der Decken hornbill C. ___ East African grey crowned crane
 B. ___ Cape griffon vulture D. ___ Abyssinian ground hornbill

17. This species of bird is native to sub-Saharan Africa, found in woodland, savannah and arid steppe habitats. They can weigh 8-9 pounds. The male has extensive inflatable bare areas on the throat and

foreneck which are red with a blue area at the front of the throat. The female's neck skin is all blue. They nest in cavities (banks or trees) excavated by their strong bills. They sport a casque on their head.

- A. ___ Von der Decken hornbill C. ___ East African grey crowned crane
B. ___ Cape griffon vulture D. ___ Abyssinian ground hornbill

18. This species of bird is native to East Africa, especially to the east of the East African Rift. They are found mainly in thorn scrub and similar arid habitats. The female has a black bill; the male has a red bill with a cream tip. They do not sport a casque on their head. They can reach 2 feet tall from beak to tail and weigh less than 8 ounces. Two or three white eggs are laid in a tree hole, which is blocked off with a cement made of mud, droppings and fruit pulp.

- A. ___ Von der Decken hornbill C. ___ East African gray crowned crane
B. ___ Cape griffon vulture D. ___ Abyssinian ground hornbill

19. This species of bird is found in open mountainous country and plains in the most southern parts of Africa. Their head and neck are bare except for a woolly down. Two prominent bare patches at the base of the neck are thought to help with sensing temperature so they can detect thermals. They nest in colonies in trees or rocky crags. They feed on carrion, usually fresh.

- A. ___ Von der Decken hornbill C. ___ East African grey crowned crane
B. ___ Cape griffon vulture D. ___ Abyssinian ground hornbill

20. Name the two species of owl at the CMZoo (not visitors)

- A. ___ Great horned owl
B. ___ Screech owl
C. ___ Barn owl

21. Name the three species of duck at the CMZoo (not visitors)

- A. ___ Muscovy duck D. ___ North American wood duck
B. ___ Shelduck E. ___ Platypus
C. ___ Mallard duck

22. Name the three species of birds of prey at the CMZoo (not visitors)

- A. ___ Red-tailed hawk C. ___ Guinea fowl E. ___ Swainson's hawk
B. ___ Bald eagle D. ___ Rio Grande turkey

Essay Questions - Write a single, short paragraph. Long answers will be returned to you for revision. Bullet points are acceptable. Use a separate sheet if printing.

23. Briefly describe the differences between the feet of birds of prey, perching birds, and swimming birds.

24. Briefly describe the differences between the beaks of birds of prey, parrots and herons.

25. Pick **one** bird species at the CMZoo and discuss **one** adaptation of that species which enables their survival in that species' habitat.

Procedural Questions

- 26.** According to the 2023 Docent Manual, are any of the following acceptable according to our dress policy? **Put an X for acceptable answers only.**
- A flowery blouse underneath the Docent tan safari jacket.
 - Just a tank top underneath the Docent windbreaker.
 - A Snow Leopard Trust t-shirt under the Docent vest.
 - The Docent green polo underneath the Docent winter jacket.
 - The Docent blue t-shirt underneath the Docent windbreaker (summer only).
- 27.** According to the 2023 Docent Manual, the Docent blue t-shirt may be worn between these dates:
- May 31 through August 31
 - May 31 through September 30
 - Never
- 28.** What activities are exceptions to the blue summer t-shirt policy (meaning that shirt cannot be worn at these events (choose ONE answer)?
- Tours and Safaris
 - Tours, Safaris and Special Events
 - Tours, Safaris & ZOOM programs (on or off grounds)
 - There are no exceptions
- 29.** Read page Z-16 of the manual. For Special Events, service hours are recorded in:
- Any cart notebook will do
 - The Special Events notebook in the DRC or Belltower
 - The Special Events notebook hidden in the Giraffe cart
- 30.** Read page Z-16 of the manual. When I sign biofacts out of the DRC, I should record them:
- You don't need to record biofacts checked out of the DRC anywhere
 - Use the Red Equipment clipboard in the DRC
 - That Safari clipboard in the DRC
 - Any Cart notebook will do
- 31.** Read page Z-16 of the manual. When working Penguins & Pelicans, I should sign into which notebook?
- Penguins & Pelicans notebook in the WEA cart
 - WEA Cart notebook
- 32.** Read page X-4 of the manual. When working a cart, I should fold the pelts such that the pelt is folded fur-side ____.
- OUT
 - IN
- 33.** Read page X-5 of the manual. When signing into the sheet for carts, special events, BBY or Penguins & Pelicans, I write in my name once per sheet and add my hours to the column for the date (True or False): _____
- 34.** Based on the above question, I should review the sign-in sheet at a cart, special event, BBY or Penguins & Pelicans to see if I already wrote my name on a line: (True or False): _____
- 35.** If you use a biofact from a Cart, you must record the biofact taken on the green page in the back of the book (True or False): _____